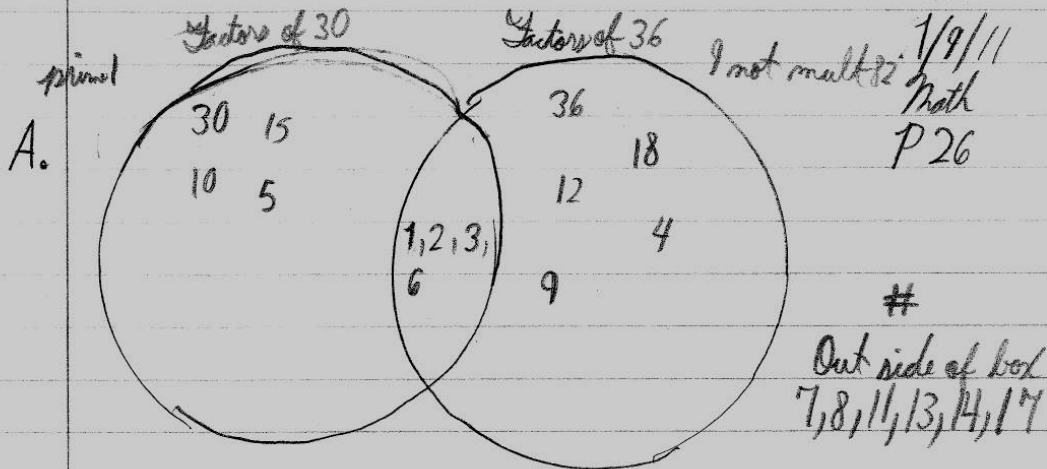


Examples for Specific Content Areas

Math Journal

2.3 Classifying Numbers



1. All the #'s in intersection are factors of 30 and 36.
2. All the numbers out side of the box are 7, 8, 11, 13, 14, and 17 because they don't go into 30 or 36.
3. The greatest common factor of 30 and 36 is 6. I found that number by looking in the overlapping part of the diagram.
4. The least common factor of 30 and 36 in the intersection is 2.